

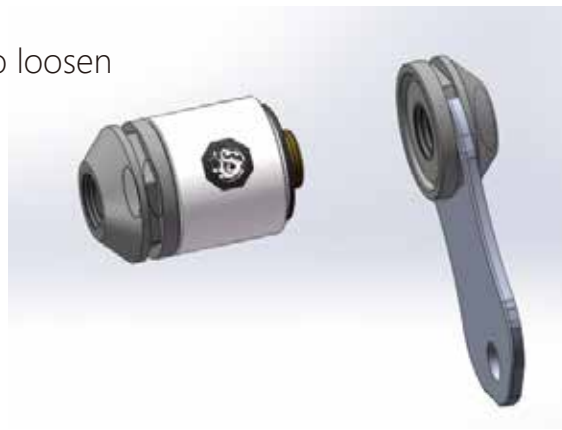
◀ 安裝方式/Installation/安装方式

使用配備的專用扳手工具進行拆裝：
Use the included wrench to assemble/disassemble:
使用配备的专用扳手工具进行拆装：

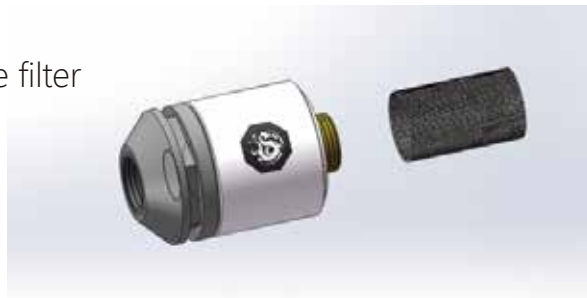
1. 扳手卡進螺帽槽位
1. Fit the wrench to the nut



2. 通過扳手逆時針轉動
Rotate wrench counterclockwise to loosen
通过扳手逆时针转动



3. 拆開螺帽取個濾網
Remove the nut and take out the filter
拆开螺帽取个滤网



4. 清水沖洗濾網內外壁
Use clean water to wash both inside and outside of the filter
清水冲洗滤网内外壁

5. 重新安裝，使用扳手順時針擰緊
Insert filter and tighten nut with wrench by rotating clockwise
重新安装，使用扳手顺时针拧紧



注意·跑水前·請先確認所有零件已安裝在正確的位置上·在不開主機·單開水泵的情況下·進行24小時的跑水測試·確保無漏水情況後再開主機·避免發生漏水而導致電腦零件的損壞。
Before filling in the water, please make sure all the components are installed correctly. To prevent any leakage which may damage the PC components, please perform a 24-hour leaking test with only the pump connected to the power supply.

注意·跑水前·请先确认所有零件已安装在正确的位置上·在不开主机·单开水泵的情况下·进行24小时的跑水测试·确保无漏水情况后再開主机·避免发生漏水而导致电脑零件的损坏。

本公司保留對產品的設計更改以及解釋的權力·如有更動恕不另行通知·產品顏色與配件以實物為準。

Bitspower reserves the right to change the product design and interpretations. These are subject to change without notice. Product colors and accessories are based on the actual product.

本公司保留对产品的設計更改以及解釋的權力·如有更動恕不另行通知·产品顏色與配件以實物為準。